



## Newsletter No. 111 Summer 2018

### **16<sup>th</sup> NATIONAL SHOW AND SALE OF TRADITIONAL AND NATIVE BREEDS**

Held under the auspices of the participating breed societies

**7<sup>th</sup> & 8<sup>th</sup> SEPTEMBER 2018**

**Closing Date for paper entries—29th July  
Closing date for online entries 5th August**

For paper entry forms and catalogues please contact

**MELTON MOWBRAY MARKET  
SCALFORD ROAD  
MELTON MOWBRAY LE13 1JY**

**TEL: 01664 562 971 FAX: 01664561153**

Email: [tw@meltonmowbraymarket.co.uk](mailto:tw@meltonmowbraymarket.co.uk)

The link for on-line entries is:  
[www.grassroots.co.uk/melton.html](http://www.grassroots.co.uk/melton.html)



# WOLDSMAN RED POLLS

S.G. PRESCOTT & SONS

WOLD HOUSE LUND DRIFFIELD E YORKS YO25 9TW

**Founded 1953**

All females are home bred and registered with the Society

Health status: Tuberculosis, Brucellosis tested.

No animal we have bred has ever had BSE.

**'Would you like contented animals like these? Contact us!'**



Herd size: 100 suckler cows, easy calving, all male calves left entire, sold as beef @ 15-18 months of age @ 550-600kgs or for breeding.

All young bulls weighed regularly & we are achieving gains of 1.7kg per day up to 365 days of age (own records).

Young cows, in calf and maiden heifers usually for sale.

Andrew & Office:

Tel: 01377 217232

Ben:

Tel: 07855 041632

Stephen:

Tel: 01964 550229

Fax: 01377 271813

Mob: 07985 745990

Email: prescott.andrew@btconnect.com

Email: ysgprescott@btinternet.com

## Fedw Stig 26877



*Sire: Fedw Thomos*

*Dam: Fedw Crag*

*Born: 26:2:2002*

*Weight: June 2003 606kg January 2009 1150kg*

**Semen Available for UK & Export**

**Bulls for Hire**

**J.R. Williams**

Pinguis Herd of Red Poll Cattle

2 Sleaford, Wellington, Telford, Shropshire TF6 6HQ

Tel: 01952 254203

Email: jrw2@btinternet.com

**[www.pinguisherd.com](http://www.pinguisherd.com)**





## POCHIN HERD OF RED POLL



Founded 2003 and already recognised internationally for  
the highest quality pedigree stock

National Champion of the Red Poll Herd Competition 2014

*Full BVD/LEPTO/Pneumonia vaccination programme*

*JOHNES disease/TB/BRUCELLOSIS tested*

Various breeding stock available for sale; please contact:

Mr Andrew Kirk 0116 269 2694 or

Mr Richard Sanders 01858 410200

Patron: Her Majesty The Queen

## The Red Poll Cattle Society

*Established 1888*



1 Nabbott Road  
Chelmsford,  
Essex CM1 2SW

01245 600032  
[secretary@redpoll.co.uk](mailto:secretary@redpoll.co.uk)  
[www.redpoll.org](http://www.redpoll.org)

## Newsletter No. 111

**Summer 2018**

President: A. L. Barratt  
President Elect: J Butler  
Chairman: J. R. Williams  
Secretary: R. J. Bowler  
Treasurer: Mrs T. J. Booker



## Dual purpose Red Polls

Charity Registration No. 213132  
Company Registration No. 27159

## IN THIS ISSUE

Notices.....	5
Secretary's Report .....	6
Regional Field Officer Arrangements .....	7
Shropshire Show 2018.....	9
The Royal Norfolk Show.....	11
The Suffolk Show.....	13
The National Red Poll Show—The Royal Three Counties.....	16
Inter-College Day .....	21
The South Suffolk Show .....	24
The Hertfordshire County Show .....	26
The Royal Cheshire Show .....	28
The Red Poll Archive .....	29
Red Polls, my family and me by Richard Dawes .....	32

### Year Letter

The year letter for 2018 registrations is I

### Registration Fees

Heifer in the Herd Book of year of birth £12

Heifer outside the Herd Book of year of birth £24

Bull £80 Transfer of ownership £10

Please note that the Herd Book closes at the end of January for entries from the preceding year. When you sell a Red Poll, please return the pedigree certificate to the office. The certificate will be sent to the new owner on payment, by the buyer or seller, of the transfer fee.

### Advertising in Red Poll News

As a member, you can take a full page advertisement for £25. The rate for non members is £50. Half pages are priced pro rata.

Copy dates; February 19th, June 19th, October 16th

For livestock sales, please contact the Secretary, Ray Bowler, at the office.

Steers are always wanted.

### Membership Subscriptions as from 1<sup>st</sup> January 2018

Registering:	£50
Associate:	£25
Overseas:	£30 in sterling
Life Registering Member:	£750
Life Associate Member:	£300
Life Overseas Member:	£500

opened the gate and I saw a sea of docile red cattle. I was totally hooked! Dennis was a very kind man and gave Virginia a lot of advice when she wanted to get her own livestock.

Virginia firstly built up a flock of Black Welsh Mountain sheep and then as more land became available she decided to start a small herd of Red Polls. She asked a local Hereford breeder and cattle expert, Bob Borwick, to help her and together they visited a range of Red Poll herds. They were not making much progress until they visited Steve and Yvonne Prescott. Steve took a lot of trouble in trying to find bloodlines from her father's herd and the Cransley Herd and we purchased four heifers. I don't think it is fully appreciated the contribution the Prescotts have made in keeping the breed going through tough times. The landlords and neighbours of the farm at Hinwick were the Reeves family who farmed the Bromborough Estate. Kit Reeves was a past President of the Society and his son Dudley had the Hinwick prefix when the Hinwick herd was dispersed. Very kindly he gave it back to Virginia which was much appreciated and enabled her to restart the Hinwick herd. From day one we were helped by David and Lis Blunt who then started their own Red Poll herd. We bought one of their cows, Abbey Rosa, whose dam came from Rosemary Philipson-Stow. Rosa became the matriarch of our most successful bloodline using semen from an Australian bull Yongerellen Power Mover.

I knew next to nothing about cattle when we started, unlike my wife. However we joined three Red Poll conferences and tours and I learnt more on those trips from the likes of Alan Wilson, Murray Williams and Peter Fleming than I could have hoped to learn at home. They were also great fun and we made some good friends.

From 1990 onwards we did a lot of showing both of the sheep and cattle. The highlight of our year became The Royal Show. It was a bit daunting at first but we had our first winner in 1996 and later won two breed championships.

As the decade wore on I took over as Chairman from Tony Fletcher at quite a difficult time for the breed. I was sure we could correct this and I was greatly helped by Giles Crisp who was an excellent but firm treasurer, Tony Barratt, Diana Flack, Ben Woolf, the Prescotts and Terina Booker plus several long-standing members. The highlight of my time as Chairman was running and hosting the 13<sup>th</sup> World Congress. Besides myself we had an excellent steering committee with Terry Mancey, Terina and Stephen and Yvonne. We put together a great programme [at least I thought it was] and we were really grateful for the generosity of the hosts. It had its moments not least when the travel agent we had appointed went bust. Luckily we had not paid them anything and appointed an excellent replacement!

I think we did get things moving and provide a base for recovery of the Red Poll breed. I am optimistic about the future and I am sure we will benefit from the trend back to native breeds of cattle. Our herd continues to flourish and Virginia and I wish everyone good luck.

*Richard Dawes*



### Red Polls, My Family and Me

There is no getting away from the fact that I am a townie! I was born in Bedford in 1942 at the height of the War and my early years were spent at my grandmother's house in Chaucer Road whilst my Father was on active service in India. My earliest memories are of that time. Christmas in the blackout with second hand presents, waving flags on VE day, the model Spitfire an RAF pilot made me and father's return from India. However the event that is still engraved on my mind is standing on the tennis court in granny's garden, it must have been in late 1944 or early 1945, watching the planes from airfields around Bedford and East Anglia stack over Bedford until the sky was thick with RAF and USAF bombers. We watched as they moved off on operations over Germany but I was obviously too young to know that many would never return home.

As the war ended life changed and my lifelong interest in agriculture began. My parents had close friends who farmed just outside Bedford and their eldest son was, and still is, a good friend. The farm was a mixed one and reflected an industry on the cusp of change. I spent many happy days there. The farm still had a heavy horse used for carting and several tractors, all Fordson Standard to begin with, which had a propensity to set on fire when refuelling. Spectacular! Most of the farm vehicles were ex-army. I remember seeing a threshing machine being used to process the grain which must have been almost its last harvest before the advent of the combine. The farm had a milking herd which I don't think had any Red Polls which were in decline as the subsidy system changed to reward volume.

I entered Bedford School in 1949 and was there until I left in 1961. In those days the School was much more closely tied to agriculture since the county had a large farming community. It had a

flourishing Young Farmers Club and just before we left school the master-in-charge gave us some advice 'what you boys should do is to marry a farmer's daughter. There is plenty of brass around there' I wonder if the advice would be the same today!? I wanted to go into agriculture but my father was definite that I was expected to join him in the family firm! Thus I found myself working on the floor of the Stock Exchange. Not very different in fact from a livestock farm!

Most weekends I returned to Bedford to hunt with the North Bucks Beagles. In the mid sixties I joined the meet just as a most attractive girl turned up. Always keen on the main chance I asked a friend who she was. He told me her name was Virginia Drummond and she was from a farming family from Hinwick out Wellingborough way as he termed it. After consuming a large piece of chocolate cake at the post hunt tea I approached her and suggested we adjourned to the local pub for a sharpener. 'Certainly not I'm busy and anyway I don't know you'. The first part of her reply was probably true but the second bit demonstrated a degree of flexibility as we have now been married for 51 years!

It was Virginia who introduced me to Red Poll Cattle. Her Father had a herd [The Hinwick Herd] but sadly he had died several years previously and the herd was dispersed. However her godfather, Dennis Hutchinson, was a well known breeder of sheep and Red Polls [The Cransley Herd]. He was a council member in the 1960s and was a Society judge not only in the UK but also in Kenya and the Rand Show in Johannesburg. Shortly after we got engaged we went over to Sunday lunch after which Dennis asked me to come outside. I thought he was going to tell me to look after his goddaughter but we headed straight for the cattle sheds,

### Annual Dinner 2018

This year's Annual Dinner will be held on Saturday, 3<sup>rd</sup> November 2018 at the Hunters Lodge Hotel, 296 Sydney Road, Crewe, Cheshire, CW1 5LU 01270 539100 [info@hunterslodge.co.uk](mailto:info@hunterslodge.co.uk), which is near the M6.

Helen and John Langley have kindly invited us to their Oaklands Herd at Bunbury, Cheshire on the Sunday, 4<sup>th</sup> November, with a burger/bap lunch provided.

Information on the Dinner and directions to the hotel are enclosed with this Newsletter, together with a booking form for the Dinner and Herd Visit. If you have any queries, please let me know.

*Terina Booker*  
*Treasurer*  
*01728 746959*

If you have anything published in a newspaper or magazine about you, your herd or what you do PLEASE let me know—as well as continuing to send me:

- ◆ articles
- ◆ points of interest
- ◆ news items
- ◆ amusing/interesting pictures
- ◆ regional tales
- ◆ handy tips or advice

My email address for your contributions for The Red Poll Newsletter is  
[sally.g53@live.com](mailto:sally.g53@live.com)  
or you can phone 07780964978

Many thanks,  
Sally

### General Data Protection Regulation (GDPR)

As from May 2018 every organisation is required under law to comply with the above regulation. The data relating to members held by the Society consists of names, addresses, telephone/mobile numbers, email addresses, method of payment of subscription, whether listed for Gift Aid, herd prefix, holding number, animals owned/bred. Selection codes are used to indicate members who are Council Members/Judges/Owners of cattle/pay by invoice. The data comes from membership application forms, transfer and sales information and enquiries and is held on a database, supplied by Grassroots Systems Ltd., at the registered office, with a backup held by the Treasurer and Grassroots Systems Ltd., as well as on the Cloud.

Data is occasionally shared with agricultural show organisers (for potential exhibitors of Red Poll cattle) and auctioneers (for potential buyers/sellers of Red Poll cattle). Also Ped-e-Web run by Grassroots Systems Ltd. is accessible via our website but only to members.

The Society's Privacy Policy can be found on the website, with copies supplied by email or post if required.

We are committed to protecting the privacy of our members, which we take seriously and treat all the information you give us with great care. If you have any questions concerning your personal data and how we look after it then please contact us.

*Terina Booker*



### Secretary's Report—21st April 2018

There are no new members for election at this meeting. There are at present 383, since the last meeting there have been three resignations. Since the last meeting I have sent out seven information packs to persons enquiring about the Society. Semen sales are steady with 56 straws being sold since the last meeting, plus 30 Castlefields Nooky FOC to a dairy producer who wants to try crossing them as agreed at the last Council meeting. Two bulls have been inspected since the last meeting, both for Joy Broughton, the only ones so far this year, both are M0, they were inspected by John Butler. The inspection scores were 167 and 173. There have only been 26 heifer registrations so far this year but that is to be expected. Member visits have been minimal since the last meeting. I have been to four members inspecting cattle for the Melton sale, whilst carrying out these I visited five other members. I have attended a Publicity and a Finance meeting at Sarah Barnes's and the Melton Mowbray sale. By the time of the meeting I will have attended the College training day at Shuttleworth. Cattle sales are slowly picking up, particularly for bulls, but the majority have been completed privately, albeit from input from myself and other Field Officers. There are several bunches of heifers for sale but I have to be honest, some of them are very plain and will be difficult to move. Others are of excellent quality but are in bTB1 areas which again are proving difficult to find new homes for. There is nothing to report regarding Probationary Judges.

*Ray Bowler*

#### Advertising on the Website

To advertise your Red Poll products on the website, please contact Sarah Barnes on 01508 470413 or [sarah@gpbarnes.net](mailto:sarah@gpbarnes.net)

For livestock sales, please contact the Secretary, Ray Bowler, at the office. Steers are always wanted.

Advertisements are posted on the website for a month. They may be renewed after this time.

#### WE NEED A...

Publicity Officer to help us promote the Red Poll Breed and to encourage membership and support. Extensive knowledge of the breed is not a necessity, just some good ideas.

Can you can help?

If so, please email

[sally.g53@live.com](mailto:sally.g53@live.com)

or you can phone 07780964978

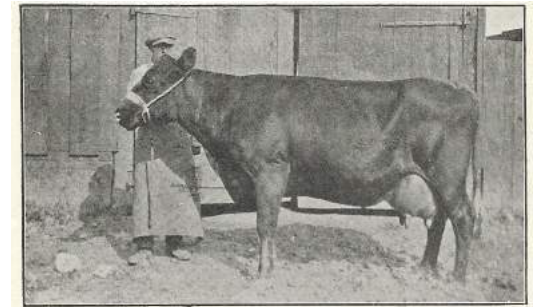


THE NORWICH TWINS.

It is an interesting story how Mr Bailey came to introduce Red Poll milk to Norwich. Having as one of the most regular patrons of the Red Poll Sales, built up a herd of considerable size, which has been carried on in essentially commercial lines, Mr Bailey was minded to retail his own milk in Norwich. Purchasing a Morris-Oxford van his son and two daughters spent one morning in a comparatively small area of Norwich in the distribution of free gifts of all of the milk from the Weston herd that morning. In two days it was impossible to supply anything like the demand for the milk of which orders were received, and in consequence the herd is being gradually extended.

#### NINETEEN YEAR OLD RED POLL COW'S FINE RECORD

Major Ivor Buxton of Little Dunham, King's Lynn possesses a Red Poll cow, Davy 295th, now nineteen years old. She bred her former owner, Mrs Herbert Hammond of Field Dalling, thirteen calves and since she has been owned by Major Buxton has had three more, making a total of sixteen. She is now in calf again. This cow well illustrates the merits of the Red Poll Breed for longevity, breeding qualities and mild persistency. Last year Davy 295th gave in her lactation period 9,715 lbs., which may be considered an extraordinary yield for a cow of that age. In her last lactation she has yielded 11,392lbs in 42 weeks—not a bad performance for a 19-year-old cow.



### DOCTOR'S PRAISE FOR RED POLLS

Not a little interest attaches to the reasons which accounted for the Norwich twins being given exclusive diet of Red Poll milk. The parents chanced to reside in a district in Norwich in which an enterprising breeder of Red Poll cattle—Mr W P Bailey of Weston—decided to retail direct from his farm all the milk his herd produced. The result to him was amazing; although his deliveries were confined to a comparatively small area, his supplies quickly fell short of the demand.

This Red Poll herd owner, who made a point of supplying milk direct from the cow, received what was, to his mind, the best testimony for the Red Poll that could be imagined when informed of a doctor's opinion on its value in preference to a manufactured food which had been recommended.

The mother of the Norwich twins, having tried some of the Red Poll milk, and the babies having improved on it, she arranged for a regular supply, and fed them on nothing else. The change was quite unknown to the doctor who had been regularly attending the infants.

The constant trouble with which these young infants were affected ceased; they soon commenced to thrive and to such an extent that not only were the parents pleased, but the doctor was surprised with the immediate progress of the babies. The latter, after an inspection of the milk, made the significant observation that it was a pity young children in the cities and towns could not have plentiful supplies of it.



MR. W. P. BAILEY'S MILK DELIVERY VAN.

### Regional Field Officer Arrangements

The Society operates a system of Honorary Regional Field Officers, as it has become clear that it is very difficult for one individual to cover the whole country. The system is co-ordinated by our Secretary, Ray Bowler. A list of Regional Field Officers is given below with contact details:

**Ray Bowler** – 01245 600032 / 07906 761206 [secretary@redpoll.co.uk](mailto:secretary@redpoll.co.uk)  
Area: South Suffolk, Essex, Greater London, Kent, Surrey, Sussex, Hampshire & Berkshire.

**Joy Broughton** – 07961 428431 [zulu623@gmail.com](mailto:zulu623@gmail.com)  
Area: Northamptonshire, Leicestershire, Warwickshire, Buckinghamshire, Bedfordshire, Oxfordshire, Hertfordshire, Cambridgeshire & Lincolnshire  
**Denis Jenkins** - 07876 748082 [denis.jenkins@tesco.net](mailto:denis.jenkins@tesco.net)

Area: Norfolk & North Suffolk.

**John Williams** - 07860 269044 [jrw2@btinternet.com](mailto:jrw2@btinternet.com)  
Area: Herefordshire, Worcestershire, Shropshire, Wales and (with the help of Stephen Prescott) the Northern Counties

**Simon Phelps** – 07855 345329 [simon-phelps@hotmail.co.uk](mailto:simon-phelps@hotmail.co.uk)  
Area: Gloucestershire, Somerset, Dorset, Wiltshire, Devon & Cornwall.

**John Anderson** - 07833 664121 [borenichjohn@gmail.com](mailto:borenichjohn@gmail.com)  
Area: Scotland.

If you wish to buy or sell cattle you should contact Ray Bowler on **01245 600032** or [secretary@redpoll.co.uk](mailto:secretary@redpoll.co.uk). Ray will pass the details to the relevant Regional Field Officer and arrange for inclusion on the website if you so desire.

We hope that you will have the opportunity to meet your Regional Field Officer before too long.

# RED POLL

Steers, heifers and young bulls  
always wanted

Paul Rackham Ltd  
Manor Farm, Bridgham, Norwich NR16 2RX  
01953 717176





Tithebarn Ltd, suppliers of mineral and vitamin supplements, protein concentrates, forage preservatives, feed blocks and mineral licks.

For further information about how our products can benefit your stock please contact:

Tithebarn Limited  
Road Five  
Winsford Industrial Estate  
Winsford  
Cheshire CW7 3PG  
  
Telephone: 01606 595000  
Fax: 01606 595045  
Email: info@tithebarn.co.uk

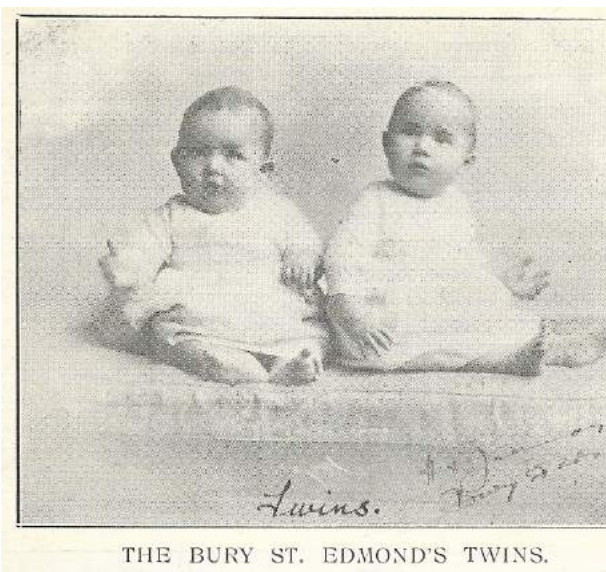
## The Red Poll Archive

Five members of parliament who are Red Poll breeders.

Top—Sir Arthur Churchman, Bart., Abbey Oaks, Sproughton, Ipswich (*Photo Hay Wrightson*) and Lord Huntingfield, Heveningham, Halesworth, Suffolk (*Photo Swaine*), who are representing constituencies in which they live in Suffolk.

Centre—The Chancellor of the Exchequer, the Rt. Hon. Winston Churchill, (*Photo Elliott & Fry*), who owns a herd in Kent.

Bottom—Mr L Forestier-Walker, Park House, Rhiwderin (*Photo Martin & Sallnow*), and Major J S Courtauld, Burton, Petworth, Sussex, represent constituencies in Monmouthshire and Sussex, counties in which they live and where they also have herds of the breed.



THE BURY ST. EDMOND'S TWINS.

The Bury St Edmund's twins being orphans from birth have been reared entirely on Red Poll milk from the herd of Mr David Smith of Chevington which is composed of well-bred cows typical of the breed in every way, and particularly in regard to the butter-fat content of the milk which averages four percent, a figure which is largely the average for herds of this old British breed.



## Royal Cheshire Show 2018 Results—Judge Vivian Caust

### Maiden heifer

- 1<sup>st</sup> Chorlton Lane Hokey Cokey – Helen Arthan
- 2<sup>nd</sup> Pear Tree Bunny – The Bickerton Family
- 3<sup>rd</sup> Pear Tree Maggie May – The Bickerton Family

### In-calf heifer

- 1<sup>st</sup> Pear Tree Ruby - The Bickerton Family

### Dry Cow

- 1<sup>st</sup> Marsh House Winifred's Eliza – Pat McLaughlin
- 2<sup>nd</sup> Pear Tree Bella – The Bickerton Family
- 3<sup>rd</sup> Chorlton Lane Frankie – Helen Arthan

### Cow in milk

No entries

### Bull

- 1<sup>st</sup> Nobodys Jedi – Helen Arthan

### Junior Champion

Chorlton Lane Hokey Cokey – Helen Arthan

### Champion

Pear Tree Ruby - The Bickerton Family

### Reserve Champion

Marsh House Winifred's Eliza – Pat McLaughlin

### Exhibitor bred Champion

Pear Tree Ruby - The Bickerton Family

### Pairs

- 1<sup>st</sup> Pear Tree Ruby and Bella – The Bickerton Family
- 2<sup>nd</sup> Nobodys Jedi & Chorlton Lane Frankie – Helen Arthan



## Shropshire Show 2018 Results—Judge Ray Bowler

### Bull any age:

- 1<sup>st</sup> Moreton Forsbrook – Helen and Terry Mancey
- 2<sup>nd</sup> Pinguis Frederick – John Williams
- 3<sup>rd</sup> Pinguis Hector – John Williams

### Cow in calf or with calf at foot:

- 1<sup>st</sup> Copperridge Alexa – John Williams
- 2<sup>nd</sup> Chorlton Lane Crystal – Helen Arthan
- 3<sup>rd</sup> Pinguis Emily 12<sup>th</sup> – John Williams
- 4<sup>th</sup> Pear Tree Ruby – Alan Bickerton

### Heifer born in 2016:

- 1<sup>st</sup> Pinguis Emily 18<sup>th</sup> – John Williams
- 2<sup>nd</sup> Pochin Marefield – John Williams
- 3<sup>rd</sup> Pear Tree Maggi May – Alan Bickerton

### Heifer born in 2017:

- 1<sup>st</sup> Pinguis Emily 19<sup>th</sup> – John Williams
- 2<sup>nd</sup> Chorlton Lane Hokey Cokey – Helen Arthan
- 3<sup>rd</sup> Moreton Baby Huia – Helen & Terry Mancey
- 4<sup>th</sup> Pinguis Caroline 14<sup>th</sup> – John Williams

### Pairs:

- 1<sup>st</sup> John Williams
- 2<sup>nd</sup> Alan Bickerton
- 3<sup>rd</sup> John Williams

**Male Champion –**  
Moreton Forsbrook

**Reserve –**  
Pinguis Frederick

**Female Champion –**  
Copperridge Alexa

**Reserve –**  
Pinguis Emily 19<sup>th</sup>

**Breed Champion –**  
Moreton Forsbrook

**Reserve –**  
Copperridge Alexa



*Terry Mancey and bull*

## Shropshire Show 2018—Judges Report

It was my great pleasure to be the last minute stand-in to judge at this year's Shropshire Show.

There were 15 animals forward. The first class was any age bulls, two x three year olds and one yearling. I placed Moreton Forsbrook first in the class due to his better topline, depth of body and mobility. He was a well balanced bull, not as big as second placed Pinguis Frederick but on the day a better balanced animal. Later on he was to become my Breed Champion.

In the cow class two cows with calves at foot and two dry cows. In first place I placed Copperridge Alexa, a well balanced cow with a deep body, excellent topline, walking well on good legs, only let down by a slightly uneven udder. She was suckling a very good six week old bull calf which assisted in her placing. Second place went to Chorlton Lane Crystal a very correct dry cow who, in my opinion, could do with a bit more size.

Seven year old cow Pinguis Emily 12<sup>th</sup> was third. She has been an excellent cow in her time but being freshly calved only a week, her udder let her down as did her feet.

In-calf heifers saw first place go to Pinguis Emily 18<sup>th</sup>, a well grown well balanced animal with lots of potential.

Yearling heifers saw another member of the Pinguis Emily family, Emily 19<sup>th</sup> to the fore. Another well-proportioned animal who walked well with lots of character.

As stated earlier I made Male Champion Moreton Forsbrook Champion with Female Champion Copperridge Alexa as reserve. The main reason for this was the balance that the bull showed together with my reservations about the cow's udder.

I would like to thank the Shropshire Show for providing first class facilities and the exhibitors for making me welcome.

*Ray Bowler*



*Breed Champion—Moreton Forsbrook with Terry Mancey and Ray Bowler*

## Hertfordshire County Show—26<sup>th</sup> May 2018 - Judge D Jenkins

### Heifer born on or after 1<sup>st</sup> January 2017

- 1<sup>st</sup> Watergate Jaffa – D Hunt
- 2<sup>nd</sup> Watergate Joanna – D Hunt
- 3<sup>rd</sup> Capel Manor Heather – Capel Manor College

### Heifer born in 2016

- 1<sup>st</sup> Watergate Impulse – D Hunt
- 2<sup>nd</sup> Watergate Henrietta – D Hunt
- 3<sup>rd</sup> Abbey Geum – D C Blunt

### Cow or Heifer in milk or calf born before 1<sup>st</sup> January 2016

- 1<sup>st</sup> Hinwick Bracken – R Dawes
- 2<sup>nd</sup> Watergate Henrietta – D Hunt
- 3<sup>rd</sup> Abbey Daffodil – D C Blunt

### Bull born on or after 1<sup>st</sup> January 2017

- 1<sup>st</sup> Nobodys Kingdom – J Broughton
- 2<sup>nd</sup> Capel Manor Horace – Capel Manor College
- 3<sup>rd</sup> Capel Manor Hector – Capel Manor College

### Male Champion and Reserve Male Champion

Nobodys Kingdom and Capel Manor Horace

### Female Champion and Reserve Champion

Watergate Impulse and Hinwick Bramble

**Chantry Challenge Bowl** for highest placed dairy or dual purpose exhibit – Nobodys Kingdom

**Native Interbreed Pair** – Nobodys Kingdom & Watergate Impulse 3<sup>rd</sup> place

**Reserve Interbreed Native Champion** – Nobodys Kingdom



*Nobodys Kingdom*



## **Hertfordshire County Show 26<sup>th</sup> May 2018—Judge's Report**

Red Poll breed classes had not been held at this show prior to this year but due to several of our local exhibitors supporting the mixed 'any other' breed classes in the past, the Hertfordshire County Show Association readily agreed to our request for them. On the day, we could have perhaps done with a few more animals forward, especially bulls, but this seems to be a national trend and we did manage as many entries as most of the other breeds. Next year this will be the venue for our own 'National Show' and from what I saw they look very well set up to accommodate us.

Yearling heifers were first into the ring. The class requires that these animals are born after 1<sup>st</sup> January 2017 and age is quite important with these youngsters. In this case there was almost six months difference between the youngest and oldest of the four animals forward. Whilst it is not necessarily the oldest that wins it always plays a part due to the size and maturity of them. My winning heifer here was Watergate Jaffa, January born and produced by the Hunt family and shown so professionally by Anna. A beautiful animal full of potential. (that's the heifer and not Anna although come to think about it!)

The next class was senior heifer born in 2016. Age is not quite such an issue here as these older animals have had more time to grow on and mature. Again there were four animals forward and all of a good standard, but my winner was another animal from the Hunt family, the April born Watergate Impulse. Such a quality animal that will surely grow into a wonderful cow. I have always believed that the key to a good herd is breeding the heifers well. You can change your bull as often as you like but your heifers need to be right. When I started with my own herd, it took three years before I managed to breed heifers that I liked enough to keep for breeding!

The final female class caused me the most difficult decision to make. 'Cow or heifer in calf or in milk' can sometimes be tricky due to the obvious differences between a heifer with its first calf at foot and an older cow that has reared several calves. My winner here was Hinwick Bracken, owned by Virginia Dawes and ably shown by David Blunt. A wonderful older cow, perhaps slightly larger than average but just my type of Red Poll. Her udder lets her down a little, still functioning perfectly but losing its shape now but at seven years old and with her fifth calf at foot I can forgive her for that. In second place by a very close margin came Watergate Henrietta, a three year old first calver with an exceptional calf at foot, and a lovely udder but of course all first calvers should have one of those.

Only three yearling bulls were forward in the male classes but what a great young prospect the winner is. Nobodys Kingdom, bred by Joy Broughton and Trevor Jones and shown by Joy was quite an eye catcher. This January 2017 born son of Creting Zeus is shaping up to be yet another tremendous bull from the 'Nobodys' stable and knowing how Joy rears hers bulls he will not have been pushed hard on concentrates either. He comes from a long line of female talent, his mother being Nobodys Ecstasy who in turn was a daughter of the outstanding prizewinning cow 'Coddendam Spice Girl'.

And so to the breed Championship. Four class winning females vied for the title of 'best female'. Another tough call with all four of them being real quality animals, I chose the senior heifer, Watergate Impulse, such a super example of our breed with the senior cow Hinwick Bramble a very close reserve. As there was only one bull class the male champion was easy to award but the breed Champion was a very close thing between Impulse and Kingdom. I chose Kingdom as I thought he just had the edge. All in all a very enjoyable day with excellent hospitality.

*Denis Jenkins*

## **Royal Norfolk Show 2018 Results—Judge John Butler**

### **Heifer born in 2017**

- 1<sup>st</sup> Lavenham Brook Hawthorn – Lady Getty
- 2<sup>nd</sup> Watergate Jenny Wren – The Hunt Family
- 3<sup>rd</sup> Ladlers Helgar – James Rea / Writtle College
- 4<sup>th</sup> Ladlers Hera – James Rea / Writtle College

### **Heifer born in 2016**

- 1<sup>st</sup> Watergate Impulse – The Hunt Family
- 2<sup>nd</sup> Capel Manor Greta – Capel Manor College
- 3<sup>rd</sup> Hopeham Glitter Belle – Sarah and Gerald Barnes
- 4<sup>th</sup> Abbey Gardenia – David and Lis Blunt

### **Heifer with calf at foot**

- 1<sup>st</sup> Abbey Fushia – David and Lis Blunt
- 2<sup>nd</sup> Watergate Henrietta – The Hunt Family

### **Cow with calf at foot**

- 1<sup>st</sup> Capel Manor Enya – Capel Manor College
- 2<sup>nd</sup> Lavenham Kirstie – Lady Getty
- 3<sup>rd</sup> Abbey Daffodil – David and Lis Blunt
- 4<sup>th</sup> Ladlers Cameo – James Rea / Writtle College

### **Champion Female**

Capel Manor Enya – Capel Manor College

### **Reserve Champion Female**

Lavenham Brook Hawthorn – Lady Getty

### **Bull born in 2017**

- 1<sup>st</sup> Ladlers Lord Hankin – James Rea / Writtle College
- 2<sup>nd</sup> Capel Manor Horace – Capel Manor College

### **Bull born before 2017**

- 1<sup>st</sup> Hopehan Fauzie – Sarah and Gerald Barnes
- 2<sup>nd</sup> Andrew Frederick Eros – Peter & Tilly Grint

### **Male Champion**

Hopehan Fauzie – Sarah and Gerald Barnes

### **Reserve Male Champion**

Ladlers Lord Hankin – James Rea / Writtle College

### **Breed Champion**

Hopehan Fauzie – Sarah and Gerald Barnes

### **Reserve Breed Champion**

Capel Manor Enya – Capel Manor College

### **Group of Three**

- 1<sup>st</sup> Ladlers – James Rea / Writtle College
- 2<sup>nd</sup> Watergate – The Hunt Family
- 3<sup>rd</sup> Capel Manor – Capel Manor College
- 4<sup>th</sup> Shuttleworth – Shuttleworth College

## Royal Norfolk Show 2018 – Inter-College showing Competition – Results

- 1<sup>st</sup> Molly Bampton – Shuttleworth
- 2<sup>nd</sup> Alice Kennedy – Writtle
- 3<sup>rd</sup> Chloe Vincent – Capel Manor
- 4<sup>th</sup> Nikki Swann – Capel Manor

### The John Plumb Memorial Trophy – Highest placed Red Poll Handler in the Beef Young handlers

Jasmine Gedney - Shuttleworth



Milly Bampton  
Shuttleworth  
Royal Norfolk Show



Jasmine Gedney, Shuttleworth College  
John Plumb Trophy



Capel Manor Enya with calf Ioana  
P Grainger and H Taylor



Hopeham Fauzie  
with A M Adams,  
Judge John Bulter,  
S Barnes



## South Suffolk Youngstock Show Results

13<sup>th</sup> May 2018

### Bull born in 2016

- 1<sup>st</sup> Hopeham Gusto – G&S Barnes
- 2<sup>nd</sup> Ladlers Gruffalo – shown by Writtle College

### Heifer born between 1<sup>st</sup> January and 30<sup>th</sup> June 2016

- 1<sup>st</sup> Watergate Impulse – D Hunt
- 2<sup>nd</sup> Hopeham Cutter Belle – G&S Barnes
- 3<sup>rd</sup> Grafton Molly – Easton and Otley College

### Heifer born between 1<sup>st</sup> January and 30<sup>th</sup> June 2017

- 1<sup>st</sup> Watergate Jaffa – D Hunt
- 2<sup>nd</sup> Watergate Joanna – D Hunt
- 3<sup>rd</sup> Ladlers Harmony – shown by Writtle College

Young Handler: Ellen Woodhouse



Ellen Woodhouse



## South Suffolk Show - 2018

First I must say a big thank you to Ray, Terina and Joy who are always there to promote the Red Poll Society. Secondly it was so good to see lots of young people leading the cattle around the show ring and working so hard in the cattle lines to bring the cattle out to the ring in tip top order. Thanks must be given to the Youth Committee for their work it is bringing in excellent results.

First into the ring were the bulls Hopeham Gusto from Mr and Mrs Barnes and Ladlers Gruffalo from Writtle College. I awarded Gusto first prize, a fantastic young bull who went on to win the Overall Champion. This bull is just what the Red Poll Society needs. This bull needs to be seen around the show rings as it is one of the best examples of the breed, congratulations to the Barnes family. The first heifer class were the older ones, January to June 2016, Watergate Impulse from the Hunt Family, a very good strong heifer showing a good top line width and depth good udder with nicely placed teats, a very good winner. Next into the ring were the heifers, January to June 2017 born, a very nice group of heifers and very well led round, first and second prize went to the Hunts with Watergate Jaffa and Watergate Joanna, two lovely well grown heifers who walked well and both had a good presence in the show ring. The rest of the entries from Writtle and Easton and Otley Colleges were all very similar and very hard to place, all walked well around the ring and any of these animals will grow on to make good cows and build the quality of the Red Poll herd nationally. Thanks to all the competitors who entered some excellent stock and thanks to the other helpers who made the day run smoothly.

*Andrew Kirk*



*Hopeham Gusto*

## Suffolk Show 2018

I would like to thank the Suffolk Show for inviting me to judge the Red Poll classes. The weather was perfect for the cattle and people attending the show. I had as my probationer judge Anthea Daw and I was delighted to have her with me and found we were on the same wavelength straight away.

The maiden heifer class born between 1 January and 31<sup>st</sup> February 2017 was split into two according to age. This is always a difficult class to judge, the quality of the cattle forward was good and made it difficult to judge. Shuttleworth Hereaux we put first and the next class Easton and Otley College came first in that section. Anthea and I found there was little to choose between all of them. One or two needed their rear feet trimming, and also some had fat round the tail head. The maiden heifer born on or between 1 January 2016 and December 2016. We put Lady Getty's Lavenham Brook Starlight first a very nice heifer good conformation and a lovely deep red colour. She was the Best Maiden Heifer. The next class, Heifer in calf or with calf at foot (first calf) Mr and Mrs Hunt's Watergate Henrietta with her calf which we placed first and her calf was the best suckled calf in that class, unfortunately only two entries. I was rather surprised there were no dry cows forward. Cow or heifer in milk or with calf at foot. There were only three entries and Lady Getty's Lavenham Brook Kirstie had good conformation a good udder a good top line nice length to her and a lovely deep red and paraded well, she came first and also had the best udder, then became our Champion Female, a worthy winner she had everything one would want in a Red Poll. Her calf was the best suckled calf in the class.

The Bull born on or after January 2017 we put Capel Manor College, Capel Manor Horace. He showed potential with good conformation and should go on to be a useful bull.

Bull born on or between 1 January and 31<sup>st</sup> was G and S Barnes' Hopeham Gusto, a lovely bull nice top line, good back end and I would like to see him in a year's time!

Bull born before 1 January 2016 G and S Barnes' Hopeham Fauzie was a really lovely bull, good top line, good back end and a good length, walked well and a lovely colour and a lovely head, a very well proportioned bull, he was our Champion Bull, he also became our Breed Champion with Lady Getty's Lavenham Brook Kirstie as our Reserve Champion.

The Best pair of animals we gave to Writtle College, we were looking for an almost identical pair, and we were not disappointed, in the group of three we also gave first place to Writtle, I remarked that I could put a ruler along their backs as they were so even in height and colour, one of the students said a spirit level would be best! I would like to congratulate all the exhibitors and handlers for all their hard work in preparing the cattle for the show, I know how time consuming it all takes and it was good to see so many students from the colleges taking part and hope they enjoyed themselves.

Thanks must also go to the stewards, both who kept the cattle flowing so there was very little hold up between classes. Lastly I would like to thank Anthea for her input in putting her views forward, it made a very interesting show.

*Su Mahon*

## Suffolk Show results 2018

### Maiden heifers – Born 2017

#### Split class. Group 1: 1<sup>st</sup> Jan – 9<sup>th</sup> March

1<sup>st</sup> Shuttleworth Hereaux – Shuttleworth College

2<sup>nd</sup> Lavenham Brook Hawthorn – Lady Getty

3<sup>rd</sup> Ladlers Hera – James Rea/Writtle College

4<sup>th</sup> Shuttleworth Honey – Shuttleworth College

5<sup>th</sup> Easton Otley Henrietta – Easton Otley College

6<sup>th</sup> Ladlers Harmonia - James Rea/ Writtle College

#### Group 2: 10<sup>th</sup> March onwards

1<sup>st</sup> Easton Otley Harriet – Easton Otley College

2<sup>nd</sup> Ladlers Helga – James Rea/Writtle College

3<sup>rd</sup> Capel Manor Holly – Capel Manor College

4<sup>th</sup> Watergate Joanna – The Hunt Family

5<sup>th</sup> Ladlers Honey - James Rea/Writtle College

6<sup>th</sup> Shuttleworth Harley – Shuttleworth College

7<sup>th</sup> Shuttleworth Haho – Shuttleworth College

8<sup>th</sup> Capel manor Heather – Capel Manor College

### Maiden heifer born 2016

1<sup>st</sup> Lavenham Brook Starlight – Lady Getty

2<sup>nd</sup> Watergate Impulse – The Hunt Family

3<sup>rd</sup> Capel Manor Greta – Capel Manor College

4<sup>th</sup> Appleton Susan 14<sup>th</sup> – Capel Manor College

5<sup>th</sup> Grafton Molly – Easton Otley College

6<sup>th</sup> Hopeham Glitter-belle – Gerald & Sarah Barnes

### Heifer in-calf or with calf at foot

1<sup>st</sup> Watergate Henrietta – The Hunt Family

2<sup>nd</sup> Capel Manor Foxglove – Capel Manor College

### Dry Cow

No Entries

### Cow in-milk

1<sup>st</sup> Lavenham Brook Kirstie – Lady Getty

2<sup>nd</sup> Capel Manor Enya – Capel Manor College

3<sup>rd</sup> Ladlers Cameo – James Rea/Writtle College

**Champion Heifer** – Lavenham Brook Starlight – Lady Getty

**Reserve** - Easton Otley Harriet – Easton Otley College

**Champion Female** – Lavenham Brook Kirstie – Lady Getty

**Reserve** - Lavenham Brook Starlight – Lady Getty

**Best Udder** - Lavenham Brook Kirstie – Lady Getty

**Reserve** - Capel Manor Enya – Capel Manor College

### Bull Born in 2017

1<sup>st</sup> – Capel Manor Horace – Capel Manor College

2<sup>nd</sup> – Capel Manor Hector – Capel Manor College

### Bull born in 2016

1<sup>st</sup> – Hopeham Gusto – Gerald and Sarah Barnes

2<sup>nd</sup> – Ladlers Gruffalo - James Rea/ Writtle College

### Senior Bull

1<sup>st</sup> – Hopeham Fauzie - Gerald and Sarah Barnes

2<sup>nd</sup> – Andrew Fredrick Eros – Peter and Tilly Grint

**Champion Bull** - Hopeham Fauzie - Gerald and Sarah Barnes

**Reserve** - Hopeham Gusto - Gerald and Sarah Barnes

**Breed Champion** - Hopeham Fauzie - Gerald and Sarah Barnes

**Reserve** – Lavenham Brook Kirstie – Lady Getty

**Pairs**

1<sup>st</sup> – James Rea / Writtle College

2<sup>nd</sup> – Easton Otley College

3<sup>rd</sup> – Capel Manor College

4<sup>th</sup> – The Hunt Family

5<sup>th</sup> – Lady Getty

### Group of Three

1<sup>st</sup> – James Rea / Writtle College

2<sup>nd</sup> – Lady Getty

3<sup>rd</sup> – Capel Manor College

4<sup>th</sup> – The Hunt Family

## Inter – College show results – Shuttleworth 19<sup>th</sup> April 2018

Judge David Hunt

### Shuttleworth

1<sup>st</sup> – Amy Carter

2<sup>nd</sup> – Abbie Allen

3<sup>rd</sup> – Frank Burley

4<sup>th</sup> – Martha Racey

Others – Molly Brampton, Adam Bedford, Kyle Caitlin, Craig Hardwick

### Writtle

1<sup>st</sup> – Megan Clifford

2<sup>nd</sup> – Alice Kennedy

3<sup>rd</sup> – Josh Ackland

4<sup>th</sup> – Amy Bridge

Others – Ed Candler, Harry Chandler, Regan Percy, Samantha Booth

### Capel Manor

1<sup>st</sup> – Nikki Swann

2<sup>nd</sup> – Katie Eggleton

3<sup>rd</sup> – Sophie Webster

4<sup>th</sup> – Ellie Charalambous

5<sup>th</sup> – Gemma Bruno

**Champion** – Nikki Swann, Capel Manor

**Reserve** – Megan Clifford, Writtle



Nikki Swann—Capel Manor Greta, Inter-college Day



In first place was Megan Clifford. Megan is a very experienced handler of cattle and of young handler competitions. She showed off the animal exceptionally and never once lost any concentration whilst in the ring. Alice Kennedy was second, Alice was again exceptional and was very unlucky to be up against Megan. Very little to choose between the first two and I know another day it could be Alice in first. Josh Ackland was a very keen handler, loads of enthusiasm and again will do well this summer at the shows. Amy Bridge was fourth and Ed Candler, Harry Chandler Regan Percy and Samantha Booth completed a very strong Whittle team.

Last but by no means least was Capel Manor. Paul Grainger and Elaine Watson bought along five students who were a great credit to them and were right on the money when they came into the ring. Some of the cattle were becoming slightly restless as it was very hot and it had been a long day for them, but the students showed their skills in dealing with tetchy situations with confidence and a smile. Although a smaller class than the previous two, it lacked nothing in the quality of handler and all of the competitors showed great confidence and knowledge and dressed very smartly. In first place I put Nikki Swann. Nikki was switched on the moment she entered the ring and showed the animal exceptionally well, always keeping the head up and the halters tidy. Her turnout was immaculate and her enthusiasm for showing was there for all to see. Second was Katie Eggleton. Katie was a great handler, smart and enthusiastic and very keen to do well only just behind Nikki. Third was Sophie Webster, a very good student who will do well. Fourth and fifth Ellie Charalambous and Gemma Bruno who were so difficult to split. Very keen handlers who showed very confidently.

The first placed students from each college then competed for the championship—Champion Nikki Swann, Reserve Megan Clifford.

A wonderful day and a huge thanks to all involved organising what I hope will be an annual event. The overall standard of all the students was exceptional a real credit to them, I wish them great success in the future.

*David Hunt*

### Showing Workshop – April 19<sup>th</sup>

"The Showing training workshop" hosted by Shuttleworth College and organised by the Red Poll Society was a great opportunity for the students. Not only did this support and underpin the knowledge and skills the students learn on their course it also extended these. They had the basic cattle handling experience but the workshop allowed them to expand their skills and understanding with relation to livestock showing. It enable them to gain a better understanding of the Red Poll breed standards and transfer their newly learnt knowledge to the show ring. It gave them a great opportunity to see others in the show ring and to progress their handling skills and show etiquette further. A great day had by all. "

*Elaine Watson*

*Level 3 Extended Diploma in Animal Management Course Manager  
Capel Manor College*

*Right: Hopeham  
Fauzie with  
Amberrmarie Adams*



*Below: Hopeham  
Fauzie with Judge Su  
Mahon, Lara  
Cakebread,  
Probationary Judge  
Anthea Daw*



***Congratulations**  
to Megan Paige  
Clifford for being  
Champion Handler  
in the Inter College  
Challenge and to  
Lara Cakebread  
for being Reserve.  
Pictured with  
Judge Sophie  
Gurton at the  
Suffolk Show*

## Report on The National Red Poll Show held at the Royal Three Counties Showground on 16<sup>th</sup> June 2018—Judge Su Mahon

On Friday 15<sup>th</sup> June we, my grandchildren William, Hannah and I travelled to Malvern to stay with their uncle and aunt as I had been invited to judge the National Red Poll Show at the Royal Three Counties Show on the Saturday. I felt very privileged to have the honour and was sad that I was replacing Rosemary Phillipson-Stow who was unfortunately unable to be there.

It rained overnight and remained cold and with showers on and off during the morning, but ideal weather for showing cattle.

My first class was amalgamated with the two Maiden heifer classes as only five forward. They were all fairly correct but different sizes, but Helen Arthan Chorlton Lane Hokey Cokey was my first choice as she had nice teat placings and a good colour. I put as my second Capel Manor College's Capel Manor Heather, and it was good to see them supporting the National Show.

Unfortunately the next two classes of Maiden heifers were again amalgamated with heifers born from 1<sup>st</sup> January to 31<sup>st</sup> December 2106. There were seven in this class. I asked each exhibitor about their heifers age and found most of them had been running with the bull. **Definition of a Maiden heifer SHE HAS NOT BEEN WITH THE BULL.** This caused the whole class to be stopped, and the Head Cattle Steward to be sent for and eventually it was sorted out but took time, so I hope the

exhibitors will take note for next year's show or any other show they attend.

My first heifer in this class was David Blunt with Abbey Geum, a lovely heifer and a promising future. My second was S Tanner and J Davis' Mendip Guinevere another stylish heifer, and Capel Manor College third with Capel Manor Greta. The heifers forward were quite difficult to judge but some very nice animals, makes judging a challenge!

Heifer in calf or with first calf at foot, eight entries forward and some lovely quality heifers. Helen Arthan's Chorlton Lane Fanilla took my eye a nice well grown animal, followed by David Blunt's Abbey Fuscia, a stylish heifer and then Anthea and Jeff Daw's Wheatfield Future—a lovely colour.

Cow in milk or with calf at foot just three forward, Terry and Helen Mancey's Moreton Baby Drury had a good udder. I always look for a cow that would be easy to milk. John Williams' cow nice but not so good in the udder.



Capel Manor—Three Counties

## Inter-College day 2018 - Judges report

It was a huge honour to be asked to judge the first Inter-college challenge on 19<sup>th</sup> April 2018. It was a very hot day at Shuttleworth and a real credit to Anne Marie Hamilton and her team to organise such a brilliant event.

Four colleges were represented on the day, Shuttleworth, Capel Manor, Writtle and Easton and Otley. Sadly due to time constraints Easton could not stay for the Showing competition in the afternoon but we had three colleges who had some exceptional students with great showmanship skills. Anne Marie and Shuttleworth provided all the cattle for the day which were very well halter trained.

The competition was to in the form of a traditional "Young Handlers" class which is very popular at most Agricultural shows, I was looking for skills in showing the animal but also how the handler presented themselves. Also I always feel it is important to see general knowledge of the animal and its management, and I am keen to see enthusiasm and enjoyment of showing manifest itself in the ring.

First in was the Shuttleworth team, they had eight really exceptional handlers, all very smartly turned out and very good at handling their animals. I was impressed with the level of knowledge they all had of their animals and the management of the herd. These students were very keen to do well and it certainly made my job quite testing. I decided to place to fourth place as I felt there was so little between the last four. For several of these students it was the first time in the ring and I was very impressed with their enthusiasm to learn and do well, which they all will. In first place was Amy Carter. Amy was an exceptional handler with great skills, really confident, smartly turned out and very enthusiastic. Amy correctly kept her eye on the judge throughout and was very knowledgeable about her animal. Second was Abbie Allen, again a great handler with good attention to detail. Third was Frank Burley having very good handling skills and I believe huge potential to do very well in the future. Fourth was Martha Racey. Also showing with great skill were Molly Bampton, Adam Bedford, Kyle Caitlin and Craig Hardwick.

Second in were Writtle College. I must note that these students were using the Shuttleworth cattle so had the disadvantage of never handling these animals before. It was a great credit to the tutors for bringing along such talented students and having helped them achieve such high standards in showmanship and knowledge of the Red Poll breed. We had 8 handlers in the ring and again I placed the first four. I had my work cut out to sort these very talented students into any sort of order. Many of them caught my eye and I did have to look hard to find very small differences to split up what was a very strong class. I did have that complete mix of very experienced, novices and every stage in between. The overall handling was superb especially as they were handling unfamiliar animals. It was a joy to judge but eventually I had to choose.



## Day 2 - Rare Breed Classes – Judge: Simon Phelps

### Bull any age

- 1<sup>st</sup> Pinguis Fredrick – John Williams
- 2<sup>nd</sup> Moreton Forsbrook – Helen and Terry Mancey
- 3<sup>rd</sup> Wheatfield Kestrel – Anthea and Jeff Daw
- 4<sup>th</sup> Pinguis Hector – John Williams

### Maiden heifer

- 1<sup>st</sup> Chorlton Lane Hokey Cokey – Helen Arthan
- 2<sup>nd</sup> Mendip Goody Goody Yum Yum – Susan Tanner and John Davies
- 3<sup>rd</sup> Pinguis Emily 19<sup>th</sup> – John Williams

### In-calf or in-milk heifer

- 1<sup>st</sup> Wheatfield Future – Anthea and Jeff Daw
- 2<sup>nd</sup> Chorlton Lane Fanilla – Helen Arthan
- 3<sup>rd</sup> Pinguis Emily 18<sup>th</sup> – John Williams
- 4<sup>th</sup> Moreton Baby Golden Grove – Helen and Terry Mancey

### Dry Cow

- 1<sup>st</sup> Pochin Illston – Anthea and Jeff Daw
- 2<sup>nd</sup> Moreton Lady Africa – Helen and Terry Mancey
- 3<sup>rd</sup> Marsh House Winifred's Eliza – Pat McLaughlin
- 4<sup>th</sup> Pinguis Emily 15<sup>th</sup> – John Williams

### Cow in milk

- 1<sup>st</sup> Morton Baby Drury – Helen and Terry Mancey
- 2<sup>nd</sup> Copperidge Alexa – John Williams
- 3<sup>rd</sup> Abbey Daffodil – David and Lis Blunt

### Breed Champion

Pinguis Fredrick – John Williams

### Reserve Champion

Wheatfield Future – Anthea and Jeff Daw



J & A Daw with Pochin illston—Reserve Champion

Judge Simon Phelps J & S Williams with R P Breed Champion Pinguis Frederick

Dry cow Anthea and Jeff Daw's Pochin Illston had a lovely wedge shape and a glorious deep red coat, she paraded well. She was followed by Terry and Helen Mancey's Moreton Lady Africa not much to choose between them all. I was glad to have four dry cows to judge. Cow with the Best udder Moreton Baby Drury, the Best suckled calf Chorlton Lane Fanilla, the Maiden heifer champion went to Abbey Geum.

The Best Female was Pochin Illston and Reserve Moreton Baby Drury.

Now we come to the Bulls born on or after 1 January 2017. All three were very useful animals, but Anthea and Jeff Daw's Wheatfield Kestrel took the eye, lovely teat placings and again a deep red coat and a good hindquarters followed by John Williams' Pingus Hector and then Terry and Helen Mancey's Moreton Lord Harare. There were just two bulls born before 1<sup>st</sup> January 2016 and John Williams' Pingus Frederick was a fine example of a mature bull, paraded well and again this bull had good teat placings and just seemed to know he was on show. There was plenty of length in him, good legs and muscles in shoulders and neck and good hindquarters. The best Junior Bull went to Anthea and Jeff Daw's Wheatfield Kestrel, Reserve John Williams' Pinguis Hector and the Junior Champion went to Anthea and Jeff Daw's Wheatfield Kestrel, Reserve David Blunt's Abbey Geum. The Champion Male John Williams' Pingus Frederick.

Now for the Overall Breed Champion. I did take rather a long

time to decide and in the end I put John William's Pingus Frederick with Reserve Anthea and Jeff Daw's Pochin Illston, they were both very worthy winners and in the end I looked long and hard to find something ... I then decided on one very small item, I would love to see Pochin Illston in milk and who knows what would have happened! The Best Pair bred and owned by the exhibitor John Williams and Reserve Terry and Helen Mancey. Best Group of three owned and bred by the exhibitor Capel Manor College, Reserve John Williams. Best Progeny Group Capel Manor College.

My grandchildren and I enjoyed the show immensely and thank everyone, exhibitors for bringing their cattle, some travelling from a long way to take part in the National Show, Stewards and especially Mrs Susan Harris who marked up my catalogue, and for the other stewards who kept the flow of cattle moving to and fro, but of course credit goes to the cattle themselves some really good examples of the Red Poll breed. Whilst we were enjoying our lunch in the marquee by the Grand ring we heard the Red Devils Display Team from the Parachute Regiment were just about to perform. We left our lunch and went outside to see the parachutists landing in the ring. It brought back such memories as my son was in the Red Devils for three years and I had only seen him parachute into the Royal Norfolk Show twice, so very exciting and really made my visit even more special... we then went and finished our lunch.



## Royal Three Counties Show 2018—National Show



### Maiden Heifer born in 2017

- 1<sup>st</sup> Chorlton Lane Hokey Cokey – Helen Arthan
- 2<sup>nd</sup> Capel Manor Holly – Capel Manor College
- 3<sup>rd</sup> Pinguis Emily 19<sup>th</sup> – John Williams
- 4<sup>th</sup> Capel Manor Heather – Capel Manor College

### Maiden Heifer born in 2016

- 1<sup>st</sup> Abbey Geum – David and Lis Blunt
- 2<sup>nd</sup> Mendip Guinevere – Susan Tanner and John Davies
- 3<sup>rd</sup> Capel Manor Greta – Capel Manor College
- 4<sup>th</sup> Appleton Susan 14<sup>th</sup> – Capel Manor College

### In-calf heifer or with 1<sup>st</sup> calf at foot

- 1<sup>st</sup> Chorlton Lane Fanilla – Helen Arthan
- 2<sup>nd</sup> Abbey Fushia – David and Lis Blunt
- 3<sup>rd</sup> Wheatfield Future – Anthea and Jeff Daw
- 4<sup>th</sup> Moreton Baby Golden Grove – Helen and Terry Mancey

### Cow in milk

- 1<sup>st</sup> Morton Baby Drury – Helen and Terry Mancey
- 2<sup>nd</sup> Copperridge Alexa – John Williams
- 3<sup>rd</sup> Abbey Daffodil – David and Lis Blunt

### Dry Cow

- 1<sup>st</sup> Pochin Illston – Anthea and Jeff Daw
- 2<sup>nd</sup> Moreton Lady Africa – Helen and Terry Mancey
- 3<sup>rd</sup> Marsh House Winifred's Eliza – Pat McLaughlin
- 4<sup>th</sup> Pinguis Emily 15<sup>th</sup> – John Williams

### Bull born in 2017

- 1<sup>st</sup> Wheatfield Kestrel – Anthea and Jeff Daw
- 2<sup>nd</sup> Pinguis Hector – John Williams
- 3<sup>rd</sup> Moreton Lord Harare – Helen and Terry Mancey

### Bull born in 2016

#### Senior Bull

- 1<sup>st</sup> Pinguis Frederick – John Williams
- 2<sup>nd</sup> Moreton Forsbrook – Helen and Terry Mancey

#### Suckling calf

Calf suckling Chorlton Lane Fanilla – Helen Arthan

#### Best Udder

Moreton Baby Drury – Helen and Terry Mancey

#### Champion Maiden Heifer

Abbey Geum – David and Lis Blunt

#### Champion Junior Bull

Wheatfield Kestrel – Anthea and Jeff Daw

#### Junior Champion

Wheatfield Kestrel – Anthea and Jeff Daw

#### Female Champion

Pochin Illston – Anthea and Jeff Daw

#### Male Champion

Pinguis Frederick – John Williams

#### Champion Red Poll

Pinguis Frederick – John Williams



*Breed Champion Pinguis Frederick with J & S Williams*

### Reserve Champion

Pochin Illston – Anthea and Jeff Daw

### Best Pair

Pinguis Frederick and Hector – John Williams

### Group of Three

Capel Manor Holly, Heather and Greta – Capel Manor College

### Progeny Group

Capel Manor Holly, Heather and Greta – Capel Manor College

### Young Handlers

- 1<sup>st</sup> Ellie Charalambous – Capel Manor College
- 2<sup>nd</sup> Stephen Williams
- 3<sup>rd</sup> Nikki Swann – Capel Manor College
- 4<sup>th</sup> Chloe Vincent – Capel Manor College